

More-Than-Human-Architecture is a series of experimental ceramic sculptures designed as 'offerings' for the more-than-human companions we share our common spaces with. The artworks have been created for community-led growing spaces across the London borough of Barnet on the occasion of the London Festival of Architecture 2023. The functional features of the pieces are intended to support the flourishing of bees, birds, beetles and butterflies and more and have been inspired by volunteers from the partnering spaces. The project aims to spark conversation around holding pollinators sacred and designing spaces with our multi-species companions in mind. Created by artist and volunteer London National Park City Ranger for Barnet Becky Lyon.

This project was made possible through an ecosystem of support! With gratitude to the Barnet Council Small Grants Community Fund; the London Festival of Architecture programming team; Camden Art Centre with special thanks to Sevak Zargarian; Metroland Studios; London National Park City; all the volunteers at the participating gardens; all the birds, bees and beetles of Barnet who inspired this project!

www.mtha.info
 @elastic_fiction
 #LFA2023

~~More-Than~~ Human* viewing times

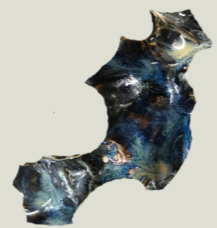
The sculptures are hosted in five different gardens. Please double check the www.mtha.info webpage before you visit. The gardens may be open at additional times for special events or may close at short notice.



Colindale Community Garden
 32 Grahame Park Way, NW9 5QY Colindale
 Tube
 Open: Mon, Tues, Weds, Thurs 10-4



Barnwood N2 Edible Forest Garden
 Tarling Rd, N2 8LG
 Finchley Central /East Finchley Tube
 Open: Fri-Sun 9-6



Finchley Central Energy Garden
 Finchley Central Station, N3 2RY
 Finchley Central Tube
 Open: all week



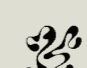


Incredible Edible @ St. John's UR Church
 Somerset Rd, New Barnet EN5 1RH
 New Barnet Train, High Barnet Tube
 Open: all week

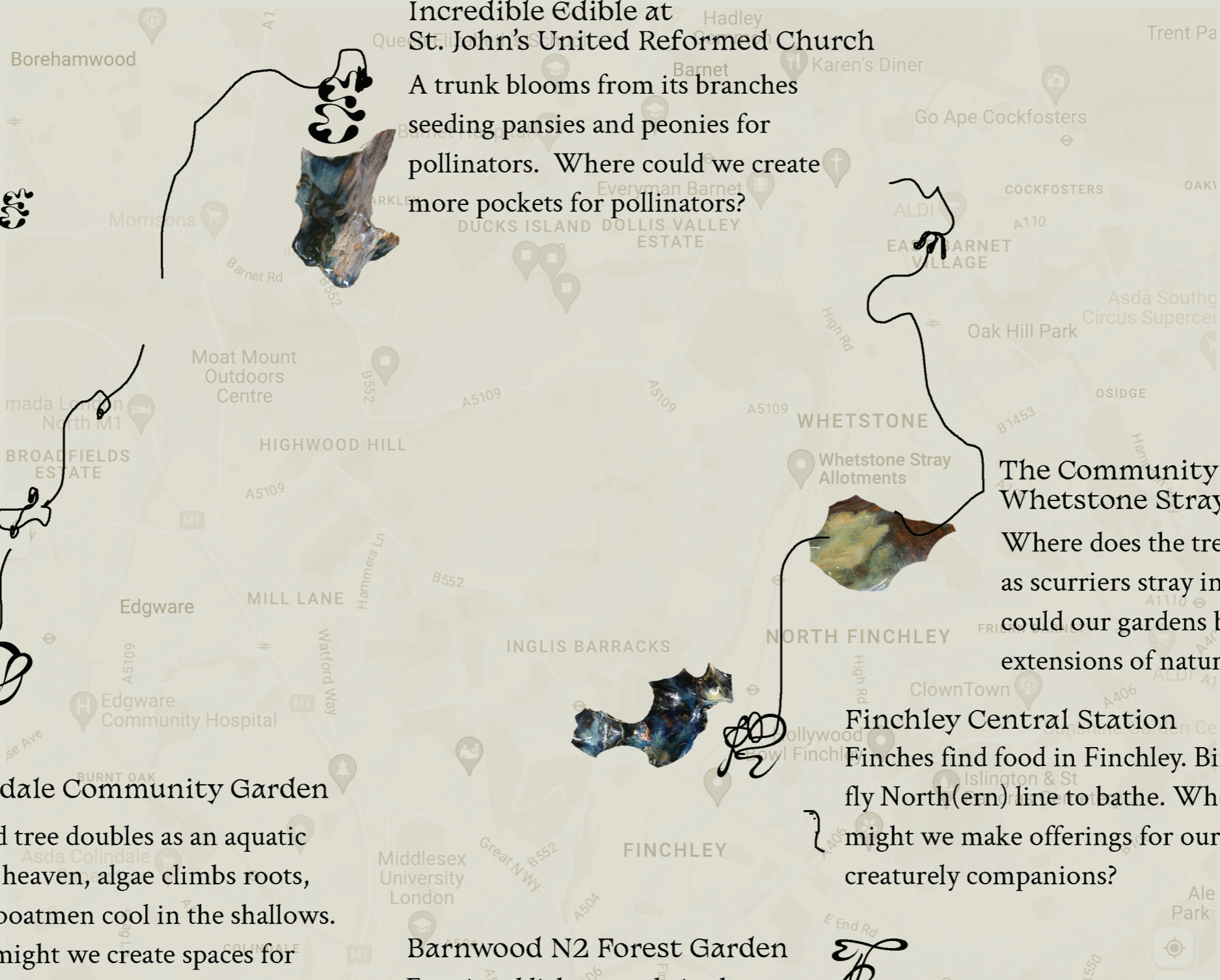


The Community Plot @ Whetstone Stray
 Allotments
 Holden Road London N12 7DX
 Woodside Park Tube
 Open: times are variable

MORE
 THAN
 HUMAN
 ARCHITECTURES

-  Seek out the sculptures as you explore the London Festival of Architecture programme.
-  Join the artist Becky Lyon for a free and fun clay workshop June 25 at Whetstone Stray Allotments
-  Save the PDF or print and respond to the think-feeling points on the reverse of this leaflet

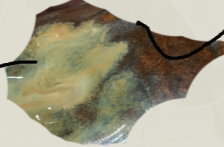
MORE THAN HUMAN ARCHITECTURES



Incredible Edible at St. John's United Reformed Church
 A trunk blooms from its branches seeding pansies and peonies for pollinators. Where could we create more pockets for pollinators?



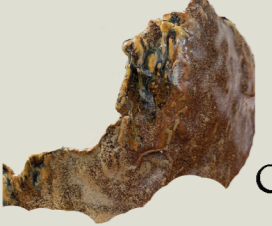
The Community Plot at Whetstone Stray Allotments
 Where does the tree begin and end as scurriers stray in the folds? How could our gardens become better extensions of nature?



Finchley Central Station
 Finches find food in Finchley. Birds fly North(ern) line to bathe. Where might we make offerings for our creaturely companions?



Colindale Community Garden
 A dead tree doubles as an aquatic insect heaven, algae climbs roots, waterboatmen cool in the shallows. How might we create spaces for shade and hydration in ever-heating times?



Barnwood N2 Forest Garden
 Fungi and lichen nestle in the paper skin of the silver birch. How can we layer our growing spaces with habitat?

